

WIPER

WIPER

WIPER

WIPER

WIPER





M
FORTY
TWO

Exterior

EVERYTHING AT YOUR DOORSTEP



50 + PLACES TO EAT AND DRINK

The cool little capitol of Canberra has justifiably gained a reputation for having a unique nightlife scene. You'll find small bars scattered throughout the city and surrounds.



5 MINUTE WALK TO CANBERRA CENTRE SHOPPING PRECINCT



Canberrans are passionate about their coffee and Braddon is Canberra's coffee epicentre. Local Baristas create much-sought after specialty brews loved by neighbourhood coffee enthusiasts.

Braddon is also a culinary paradise and the place to dine for food aficionados. Five of Canberra's Hatted Restaurants are located within walking distance.

20 MINUTE WALK TO AUSTRALIAN NATIONAL UNIVERSITY



Experience the best of Canberra in this leafy green neighbourhood which offers a well-balanced lifestyle within walking distance of the business district and Australian National University.



The Elouera Street light rail stop is close to the Braddon entertainment precinct and is your first stop to exploring exciting Braddon and its surrounding areas.

2 MINUTE WALK TO LIGHT RAIL STOP



MAP MAP MAP MAP

RESTAURANTS

- 1 Chaki Chaki
- 2 Milky Lane
- 3 Debacle
- 4 The Italian Place
- 5 Ramentic
- 6 Braddon Merchant
- 7 Black Fire
- 8 Grease Monkey
- 9 EightySix
- 10 Zaab
- 11 Chez Fredric
- 12 Burger Hero
- 13 Lazy Su
- 14 Yat Bun Tong Dumpling House
- 15 Marble and Grain
- 16 Topsy Bull
- 17 Temporada
- 18 Zeus Street Greek
- 19 Tikka Take
- 20 Courgette
- 21 Blu Ginger
- 22 Kokomo's
- 23 CBD Dumpling House
- 24 Sammy's Kitchen
- 25 Akiba
- 26 Flash
- 27 Shorty's
- 28 Grill'd
- 29 Bistro Nguyen's
- 30 Church
- 31 Beach Burrito Co.
- 32 Nosh
- 33 Guild
- 34 Raku

CAFÉS

- 35 Kyo
- 36 Bario Collective Café
- 37 Lonsdale Street Café
- 38 Frugii Dessert Laboratory
- 39 Elemental Café
- 40 Messina
- 41 Sonoma
- 42 Eighty/20
- 43 Sweet Bones Bakery & Café
- 44 Rye Café
- 45 Café Gather
- 46 Lonsdale Street Roasters
- 47 Coffee Lab
- 48 Bearded Bean
- 49 Koko Black
- 50 Brew Nation

BARs

- 51 Bentspoke Brewing Co.
- 52 Rizla
- 53 Assembly
- 54 Knightsbridge Penthouse
- 55 The Civic Pub
- 56 Hopscotch
- 57 Benchmark Wine Bar
- 58 Hippo
- 59 White Rabbit Cocktail Room
- 60 Honkytonks
- 61 Highball Express
- 62 Mr Wolf
- 63 Bar Rochford
- 64 Blackbird
- 65 Mooseheads Pub & Nightclub
- 66 Cube Nightclub

RETAIL

- 67 Moxom + Whitney Florist
- 68 Rebel Muse
- 69 Tip You're It
- 70 Canberra Centre
- 71 No Name Lane
- 72 David Jones
- 73 Myer Canberra
- 74 Zara
- 75 H&M
- 76 Apple
- 77 Mecca
- 78 Haigh's Chocolate
- 79 Pepe's Paperie

CULTURE AND ENTERTAINMENT

- 80 Club Lime
- 81 Flourish Yoga
- 82 CrossFit Three Flow
- 83 Hiit Republic
- 84 F45 Training Braddon
- 85 Fitness First
- 86 Dendy Cinema
- 87 Canberra Museum & Gallery
- 88 Canberra Theatre Centre

 Jolimont Bus Centre

 Light Rail Stops

2 Minute Walk To Light Rail Stop

5 Minute Walk To Canberra Centre

5 Minute Drive To Australian National University

11 Minute Drive To Canberra Airport



MAP MAP MAP MAP





Bathroom



A_____M

The early bird is spawn in the AM aesthetic. Restart each day with a light-filled colour palette that reflects the break of dawn. Delight the senses to fresh textures in your breezy open space.



P_____M

The wonderment of the dark night lives on with the PM aesthetic, bringing a rich sense of luxe textures to everyday living. A contemporary dark colour palette for sophisticated tastes.



SCHEME

LIGHT



DARK

SCHEME

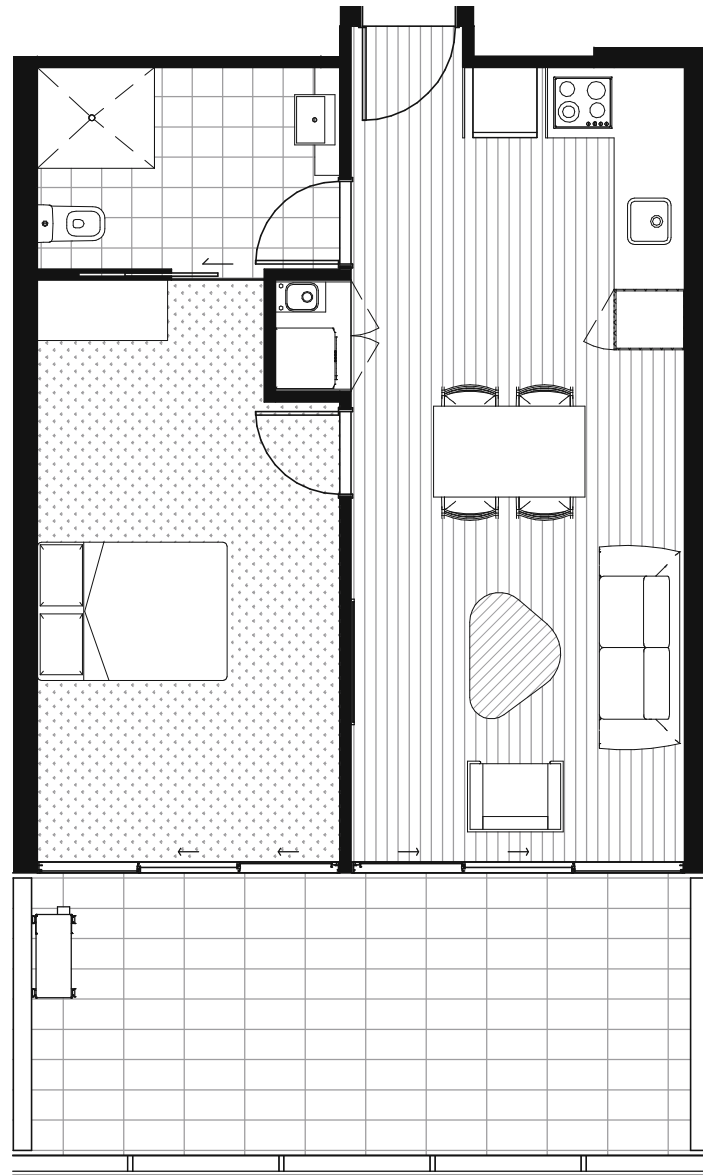


FLOOR PLANS
FLOOR PLANS
FLOOR
FLOOR PLANS
FLOOR PLANS
FLOOR PLANS
FLOOR PLANS
FLOOR PLANS
FLOOR PLANS
FLOOR PLANS



FLOOR PLANS
FLOOR PLANS
FLOOR PLANS
FLOOR PLANS
FLOOR PLANS
FLOOR PLANS
FLOOR PLANS
FLOOR PLANS
FLOOR PLANS
FLOOR PLANS
FLOOR PLANS
FLOOR PLANS

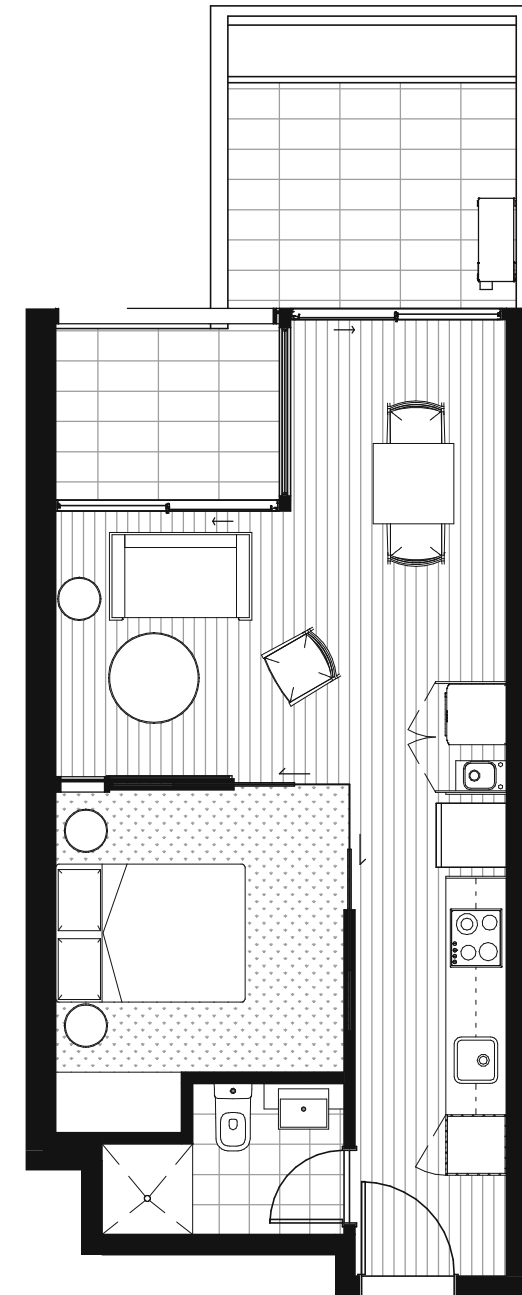
UNIT TYPE 01



**1 BEDROOM
1 BATHROOM**

**RESIDENTIAL
BALCONY** 55.0M²
20.0M²

UNIT TYPE 02

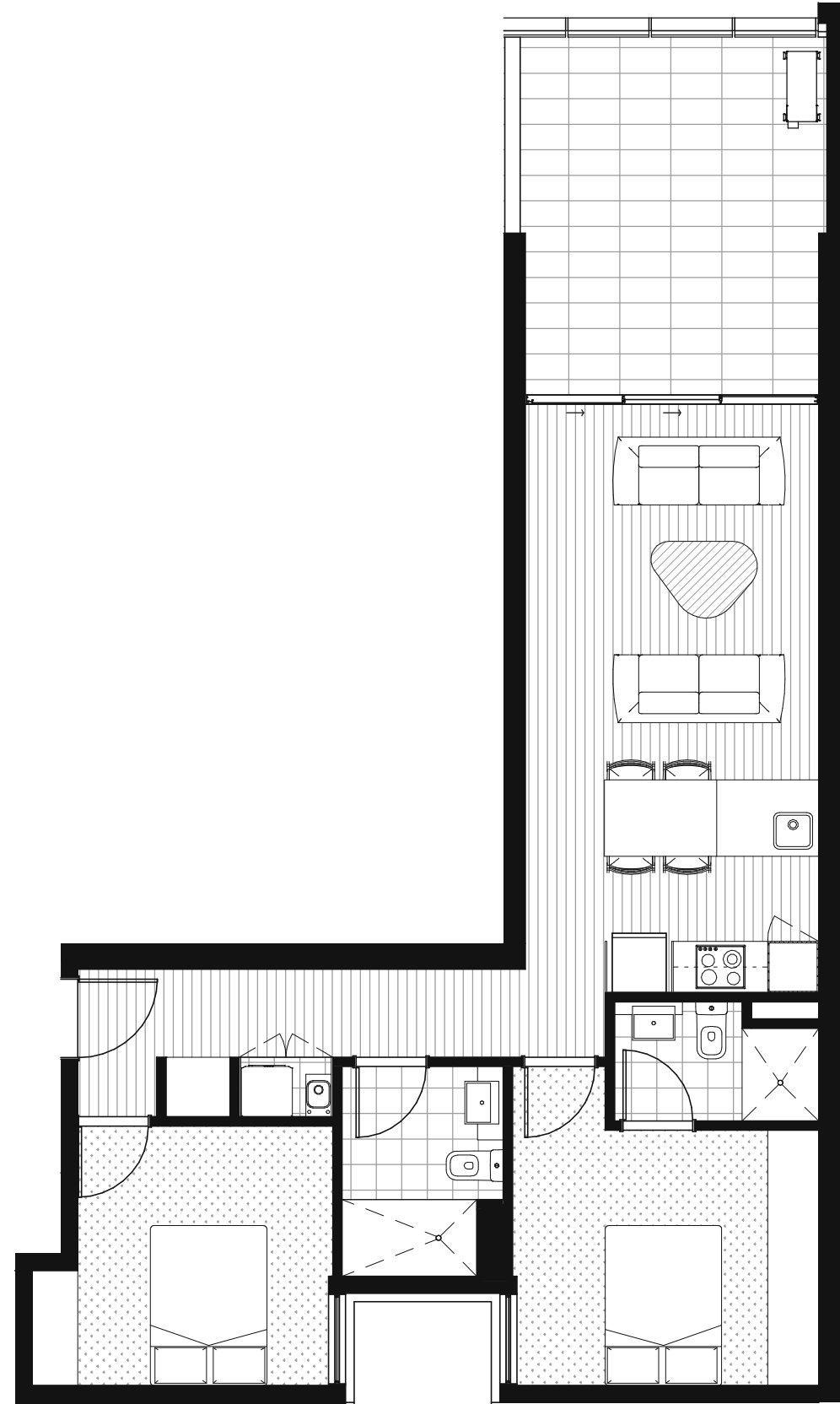


**1 BEDROOM
1 BATHROOM**

**RESIDENTIAL
BALCONY** 40.0M²
14.0M²



UNIT TYPE 03



**2 BEDROOM
2 BATHROOM**

**RESIDENTIAL
BALCONY**

**72.0M²
17.0M²**

UNIT TYPE 04



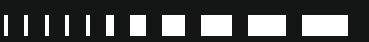
**3 BEDROOM
2 BATHROOM**

**RESIDENTIAL
BALCONY**

**93.0M²
32.5M²**



Kitchen



DEVELOPED BY



Established in 2011, Core Developments is a Canberra-based company with expertise in development, construction, project management, hydraulic and civil works. Specialising in units and residential property, Core brings projects to life from boutique townhouse developments to large resort style apartment complexes. As reputable developers, Core's sentiment is to build 'places for people.'

coredev.com.au



Northridge - Denman Prospect



Ohana - Batemans Bay



Salt - Kingston



Mizure Villas - Lawson

MEET THE TEAM

DESIGNED BY



JUDD.studio is a boutique Canberra practice specialising in Architecture and Urban Strategy. The team are passionate about creating beautiful buildings, quality urban spaces and opportunities for strategic development.

juddstudio.com.au

SALES BY



Established in 2014, WealthMark Group is a specialist property consultancy company that provides a diverse range of innovative services and solutions for the clients. Since its inception, WealthMark Group has gained a well-deserved reputation within the industry for selection and delivery of quality products and services.



WORLD

WORLD

 m42braddon.com.au

 1300 96 96 16

 m42@wealthmark.com.au

DISCLAIMER - THE INFORMATION CONTAINED IN THIS BROCHURE IS FOR THE GUIDANCE OF PROSPECTIVE PURCHASE AND ALL ILLUSTRATIONS ARE INDICATIVE ONLY. PROSPECTIVE PURCHASES SHOULD RELY ON THEIR OWN ENQUIRIES AND THE INFORMATION IN THE CONTRACT FOR SALE FOR THE DEVELOPMENT.